

List of pages in this Trip Kit

Trip Kit Index

Airport Information For CYFS

Terminal Charts For CYFS

Revision Letter For Cycle 05-2013

Change Notices

Notebook

General Information

Location: FT Simpson NT Can
IATA Code: YFS
Lat/Long: N61° 45.6' W121° 14.2'
Elevation: 556 ft

Airport Use: Public
Magnetic Variation: 20.6°E

Fuel Types: 100 Octane (LL), Jet A-1
Repair Types: Minor Airframe, Minor Engine
Customs: No
Airport Type: IFR
Landing Fee: No
Control Tower: No
Jet Start Unit: No
LLWS Alert: No
Beacon: Yes

Sunrise: 1106 Z
Sunset: 0457 Z,

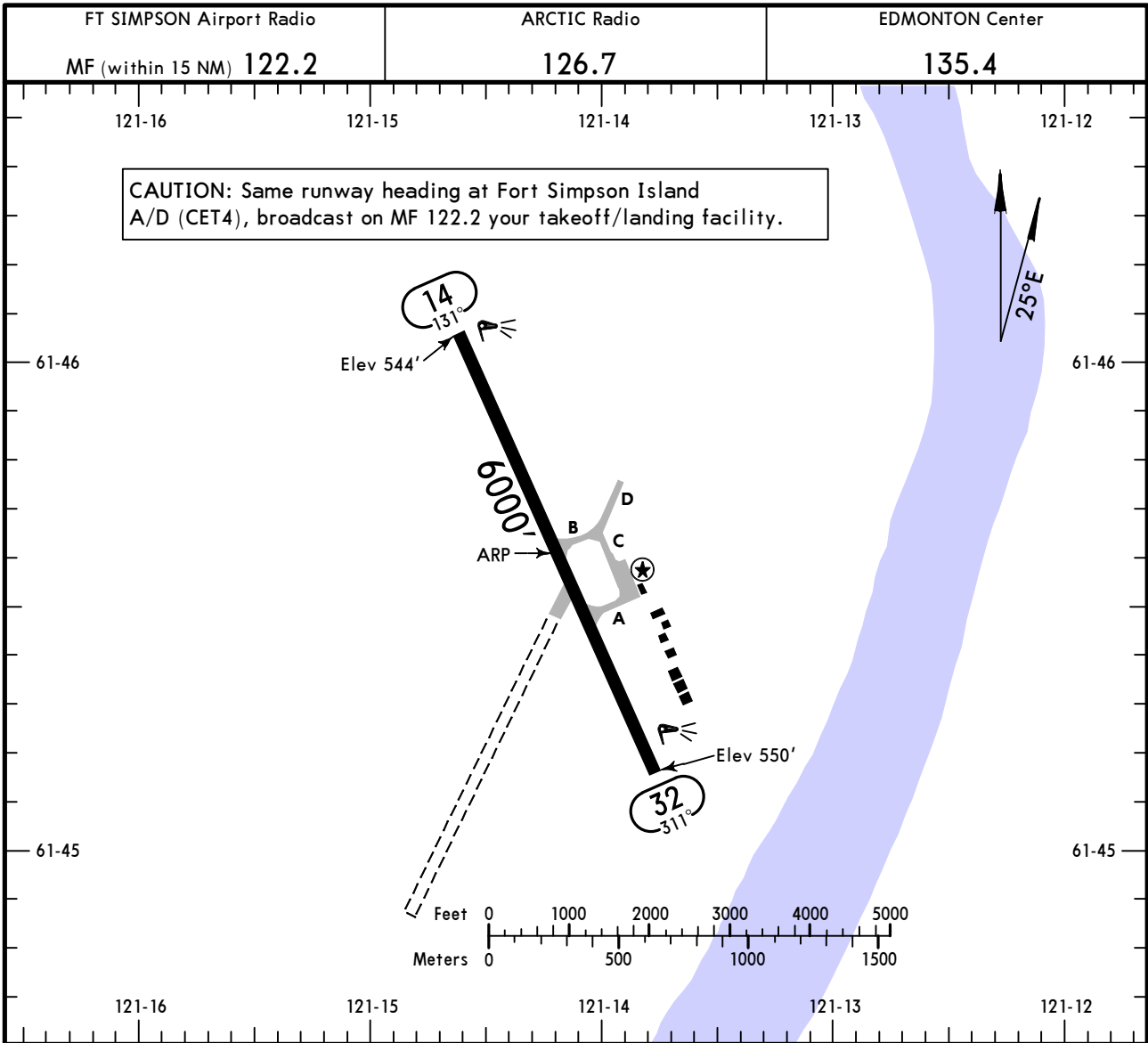
Runway Information

Runway: 14
Length x Width: 6000 ft x 150 ft
Surface Type: asphalt
TDZ-Elev: 555 ft
Lighting: Edge, Pilot controlled

Runway: 32
Length x Width: 6000 ft x 150 ft
Surface Type: asphalt
TDZ-Elev: 556 ft
Lighting: Edge, Pilot controlled

Communication Information

FT Simpson Airport Radio 122.2 At or below 3600 ft Out to 15 mi. CARS MF PCL
Arctic Radio/North Bay Fi Radio 126.7 Flight Info Service RCO
Edmonton Centre Center 135.4 Remote Communications Air-Ground



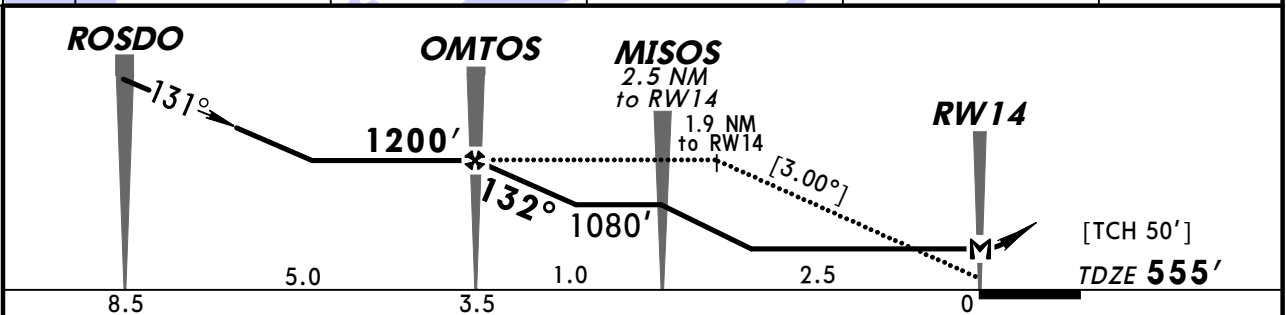
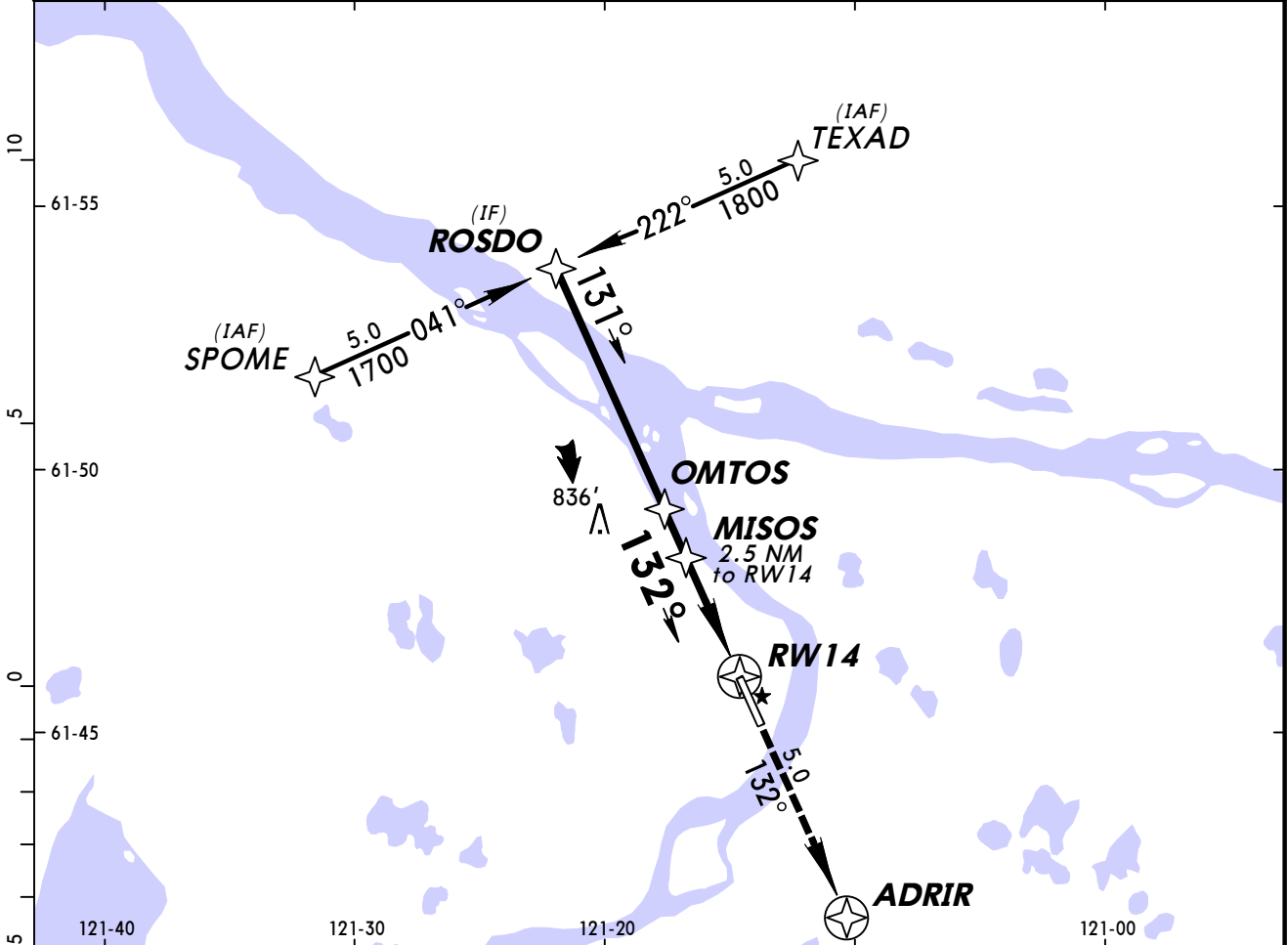
ADDITIONAL RUNWAY INFORMATION

| RWY | | USABLE LENGTHS | | | WIDTH |
|----------|-------------------------------|----------------|-------------|----------|-------|
| | | Threshold | Glide Slope | TAKE-OFF | |
| 14 32 | ① MIRL ①② PAPI-L (angle 3.0°) | | | | 150' |
| | | | | | |
| | | | | | |
| | | | | | |
| | | | | | |

- ① Activate on 122.2.
- ② For aircraft with eye-to-wheel height up to 25'.

| | TAKE-OFF | |
|---|----------|--|
| | All Rws | |
| A | 1/2 | |
| B | | |
| C | | |
| D | | |

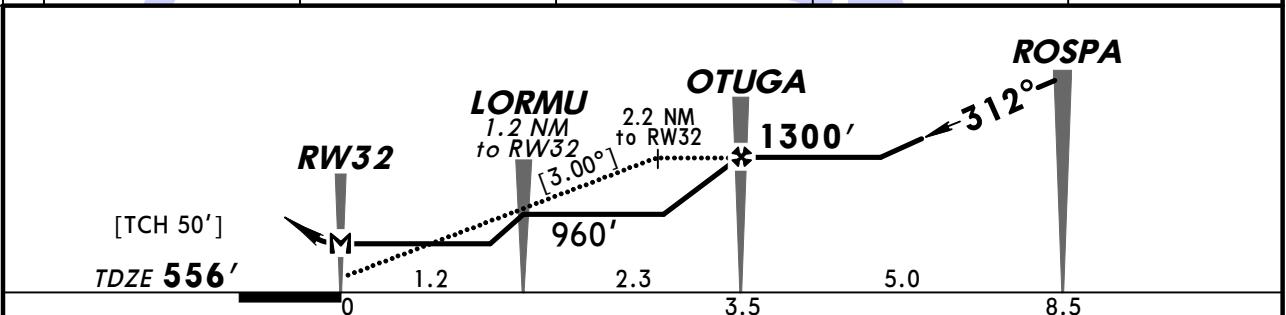
| | | | | | |
|--|----------------------------------|--|--------------------------------------|--|-----------------------|
| EDMONTON Center 135.4 | | ARCTIC Radio 126.7 | | FT SIMPSON Airport Radio MF (within 15 NM) 122.2 | |
| RNAV | Final Apch Crs 132° | Minimum Alt OMTOS 1200' (645') | LNAV MDA(H) 940' (385') | Apt Elev 556' | 3400' MSA RW14 |
| MISSED APCH: Climb to 1900' on track of 132° to ADRIR. | | | | | |
| Alt Set: INCHES Trans level: FL 180 Trans alt: 18000' 1. SAFE ALTITUDE WITHIN 100 NM 8600'. 2. Pilot controlled lighting 122.2. | | | | | |



| | | | | | | | | | | |
|-----------------------|-----|-----|-----|-----|-----|-----|--------|-------|---------|-------|
| Gnd speed-Kts | 70 | 90 | 100 | 120 | 140 | 160 | PAPI-L | 1900' | on 132° | ADRIR |
| Descent angle [3.00°] | 372 | 478 | 531 | 637 | 743 | 849 | | | | |
| MAP at RW14 | | | | | | | | | | |

| | | | | | | | |
|---------------------------|-------|--|--|----------------|--------------------|--|--|
| STRAIGHT-IN LANDING RWY14 | | | | CIRCLE-TO-LAND | | | |
| LNAV | | | | Max Kts | | | |
| MDA(H) 940' (385') | | | | MDA(H) | | | |
| A | 1 1/4 | | | 90 | 1060' (504')-1 1/2 | | |
| B | | | | 120 | 1060' (504')-2 | | |
| C | | | | 140 | 1060' (504')-2 | | |
| D | | | | 165 | 1160' (604')-2 | | |

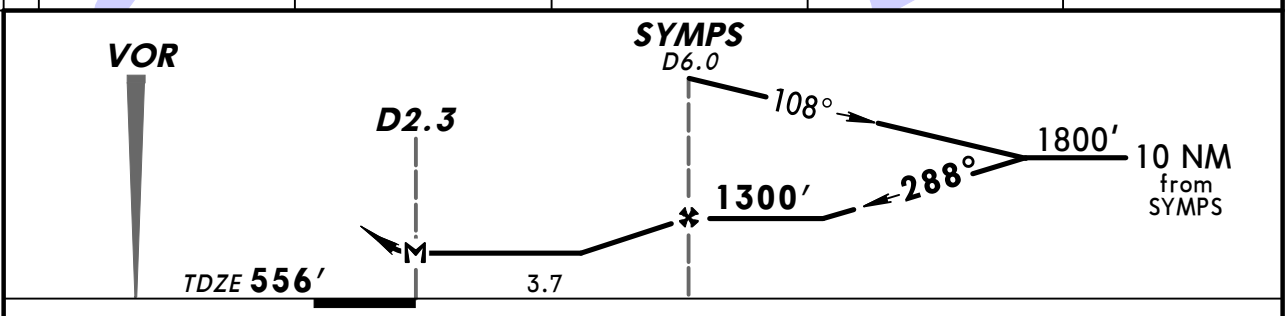
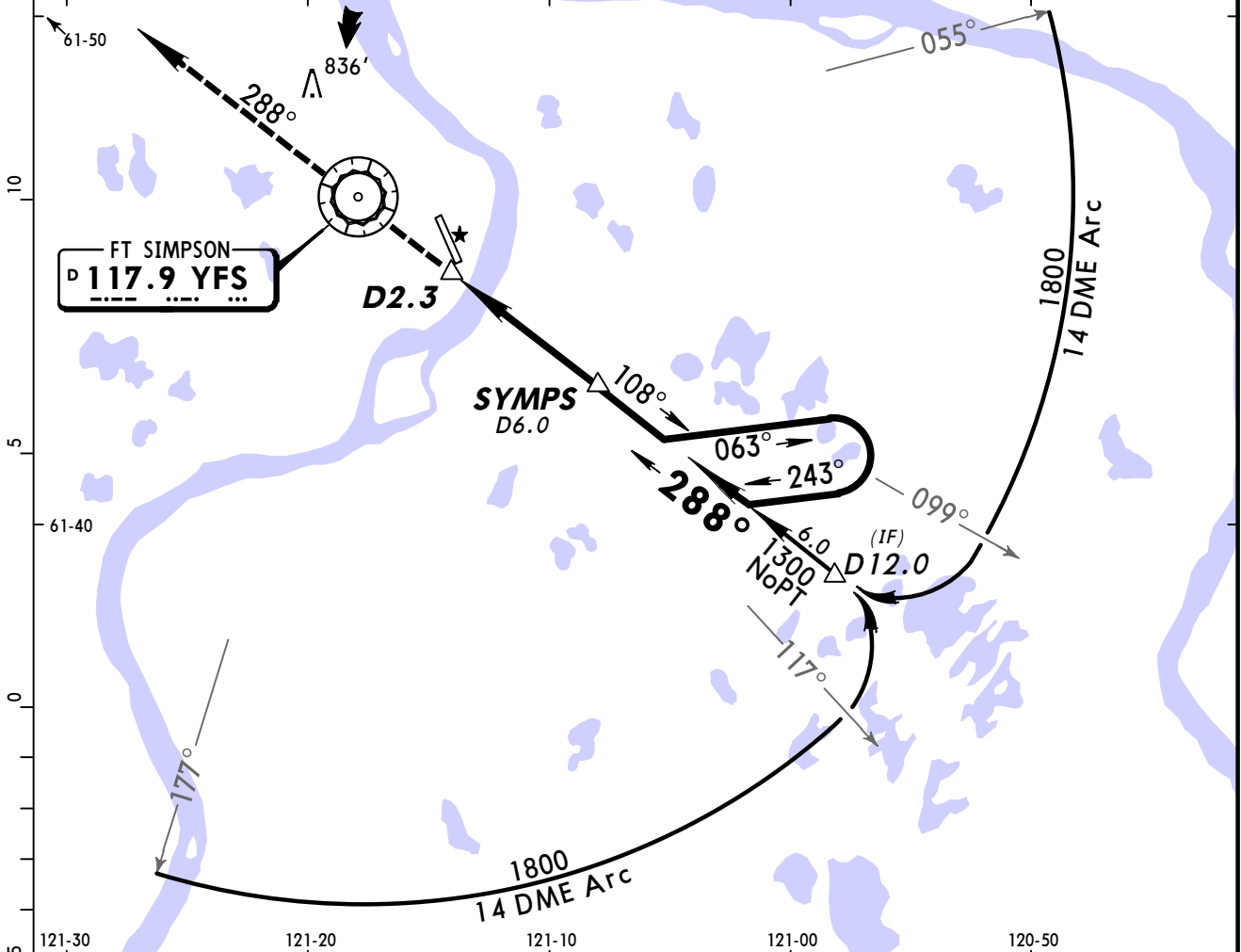
| | | | | | |
|---|-------------------------------|--|-----------------------------------|--|-----------------------|
| EDMONTON Center 135.4 | | ARCTIC Radio 126.7 | | FT SIMPSON Airport Radio MF (within 15 NM) 122.2 | |
| RNAV | Final Apch Crs 312° | Minimum Alt OTUGA 1300' (744') | LNAV MDA(H) 860' (304') | Apt Elev 556' | 3400' MSA RW32 |
| MISSED APCH: Climb to 1900' on track of 312° to XORAM. | | | | | |
| Alt Set: INCHES | | Trans level: FL 180 | | Trans alt: 18000' | |
| 1. SAFE ALTITUDE WITHIN 100 NM 8600'. 2. Pilot controlled lighting 122.2. | | | | | |



| | | | | | | | | | |
|-----------------------|-----|-----|-----|-----|-----|-----|--------|--------------------------|-------|
| Gnd speed-Kts | 70 | 90 | 100 | 120 | 140 | 160 | PAPI-L | 1900' ↑ on 312° | XORAM |
| Descent angle [3.00°] | 372 | 478 | 531 | 637 | 743 | 849 | | | |
| MAP at RW32 | | | | | | | | | |

| STRAIGHT-IN LANDING RWY 32 | | CIRCLE-TO-LAND | |
|----------------------------|---|----------------|-------------------|
| LNAV | | LNAV | |
| MDA(H) 860' (304') | | MDA(H) | |
| A | 1 | Max Kts | |
| B | | 90 | 1060' (504') - 1½ |
| C | | 120 | 1060' (504') - 2 |
| D | | 165 | 1160' (604') - 2 |

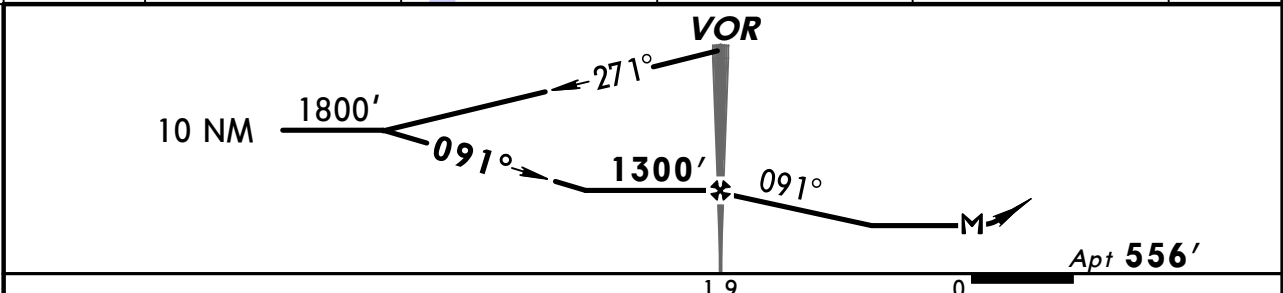
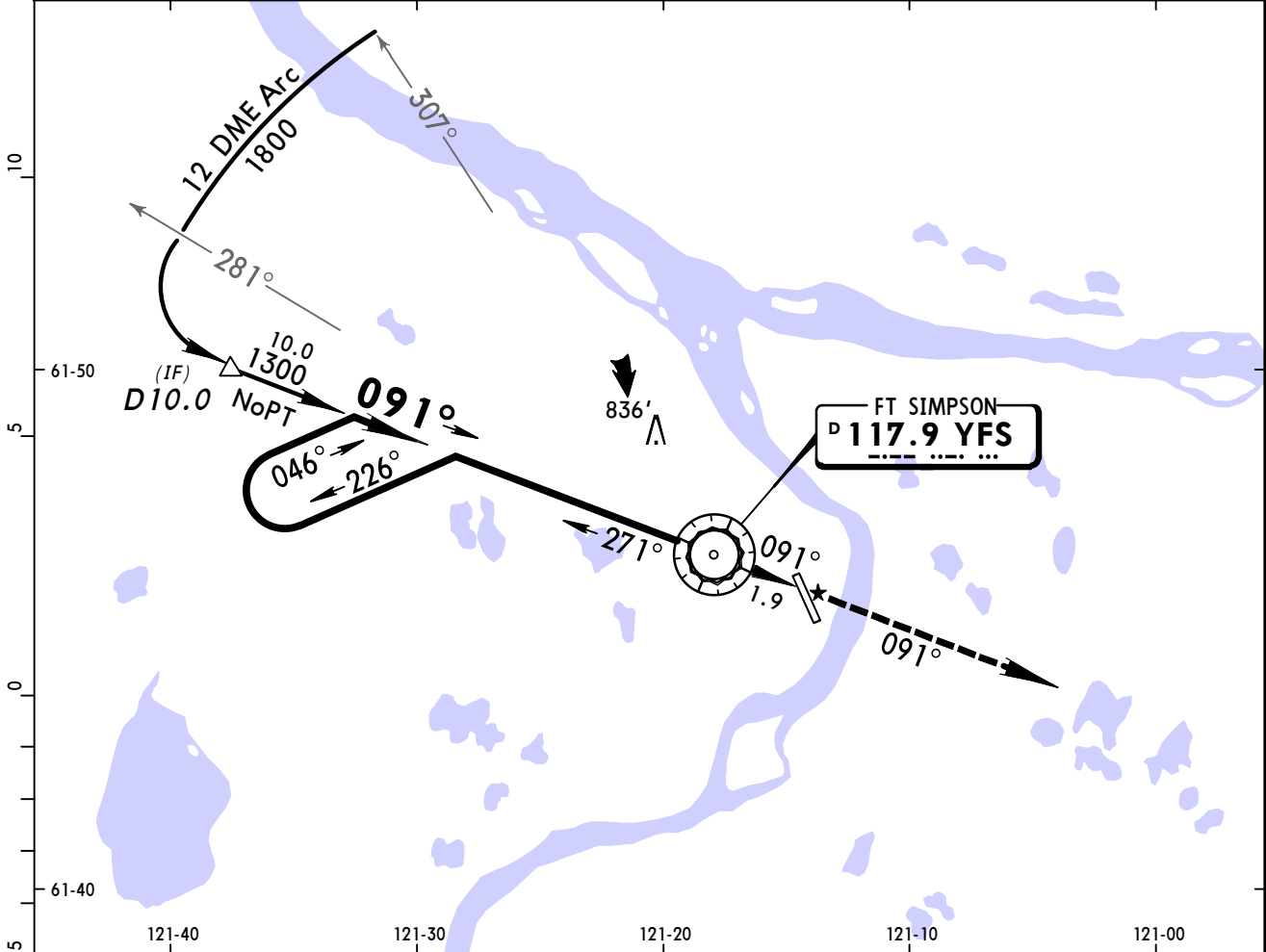
| | | | | | |
|---|----------------------------------|--|------------------------------|--|--------------------|
| EDMONTON Center 135.4 | | ARCTIC Radio 126.7 | | FT SIMPSON Airport Radio MF (within 15 NM) 122.2 | |
| VOR YFS 117.9 | Final Apch Crs 288° | Minimum Alt SYMPS 1300' (744') | MDA(H) 960' (404') | Apt Elev 556' | TDZE 556' |
| MISSED APCH: Climb to 1800' on track of 288°. Return to YFS VOR. | | | | | <p>MSA YFS VOR</p> |
| Alt Set: INCHES | | Trans level: FL 180 | | Trans alt: 18000' | |
| 1. SAFE ALTITUDE WITHIN 100 NM 8600'. 2. Pilot controlled lighting 122.2. | | | | | |



| | | | | | | | | |
|-------------|--|--|--|--|--------|-------|----|------|
| MAP at D2.3 | | | | | PAPI-L | 1800' | on | 288° |
|-------------|--|--|--|--|--------|-------|----|------|

| STRAIGHT-IN LANDING RWY32 | | CIRCLE-TO-LAND | |
|---------------------------|----|----------------|-------------------|
| MDA(H) 960' (404') | | Max Kts | MDA(H) |
| A | 1¼ | 90 | 1060' (504') - 1½ |
| B | | 120 | 1060' (504') - 2 |
| C | | 140 | 1060' (504') - 2 |
| D | | 165 | 1160' (604') - 2 |

| | | | | | |
|---|----------------------------------|---|--------------------------------|--|--------------------|
| EDMONTON Center 135.4 | | ARCTIC Radio 126.7 | | FT SIMPSON Airport Radio MF (within 15 NM) 122.2 | |
| VOR YFS 117.9 | Final Apch Crs 091° | Minimum Alt VOR 1300' (744') | MDA(H) Refer to Minimums | Apt Elev 556' | |
| MISSED APCH: Climb to 1800' on track of 091°. Return to YFS VOR. | | | | | <p>MSA YFS VOR</p> |
| Alt Set: INCHES | | Trans level: FL 180 | | Trans alt: 18000' | |
| 1. SAFE ALTITUDE WITHIN 100 NM 8600'. 2. Pilot controlled lighting 122.2. | | | | | |



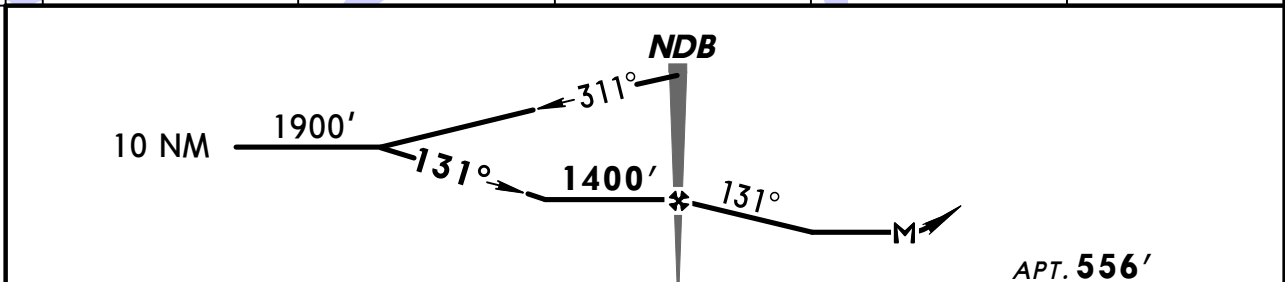
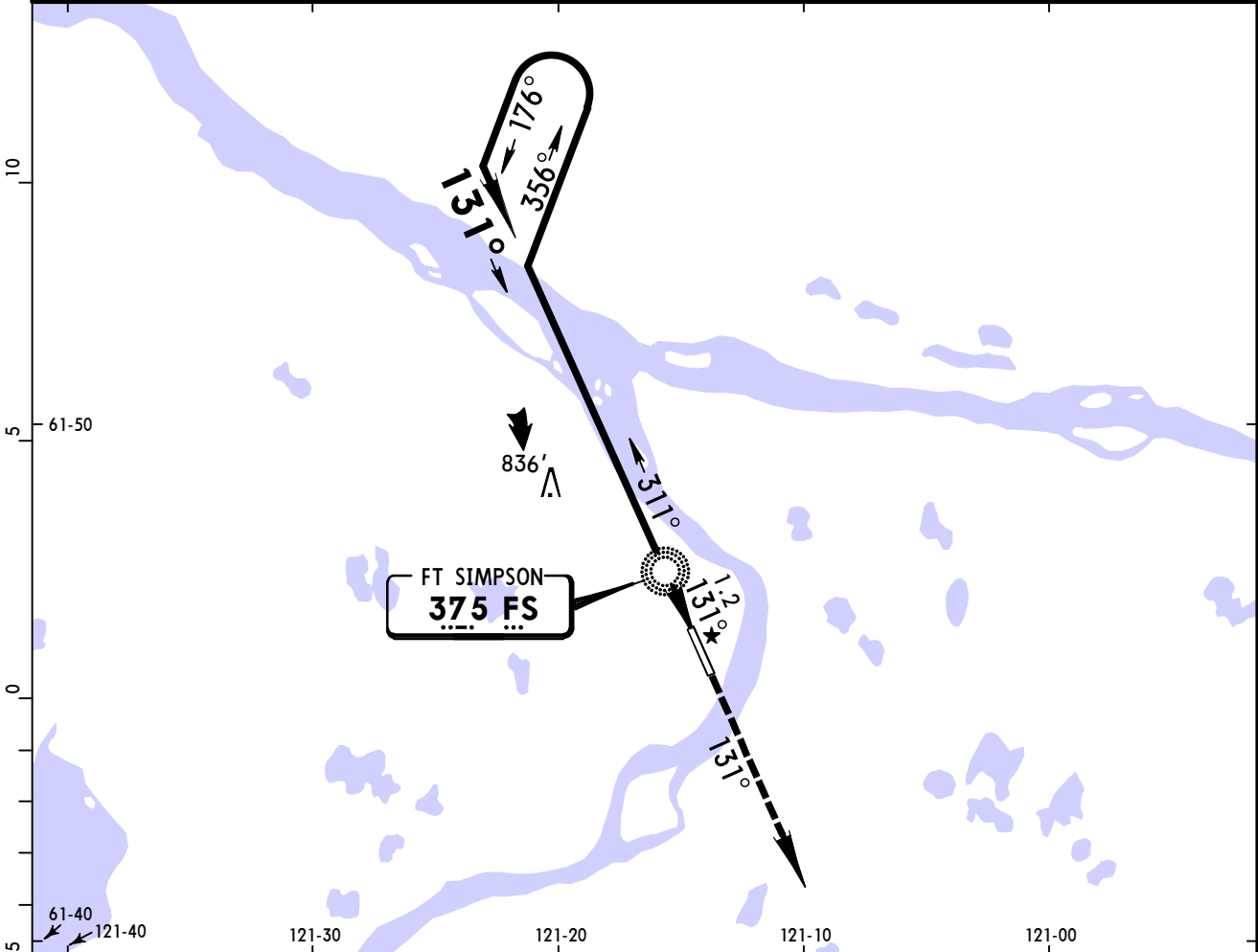
| Gnd speed-Kts | 70 | 90 | 100 | 120 | 140 | 160 | |
|---------------|-----|------|------|------|------|------|------|
| VOR to MAP | 1.9 | 1:38 | 1:16 | 1:08 | 0:57 | 0:49 | 0:43 |

Lighting - Refer to Airport Chart

1800' on **091°**

| | | | |
|---|---------|------------------------|--|
| | | CIRCLE-TO-LAND | |
| | Max Kts | MDA(H) | |
| A | 90 | 1060' (504')-1½ | |
| B | 120 | 1060' (504')-2 | |
| C | 140 | 1060' (504')-2 | |
| D | 165 | 1160' (604')-2 | |

| | | | | | |
|---|--------------------------------------|---|---------------------------------|--|--|
| EDMONTON Center 135.4 | | ARCTIC Radio 126.7 | | FT SIMPSON Airport Radio MF (within 15 NM) 122.2 | |
| NDB FS 375 | <i>Final Apch Crs</i> 131° | <i>Minimum Alt NDB</i> 1400' (844') | <i>MDA(H) Refer to Minimums</i> | <i>Apt Elev</i> 556' | |
| MISSED APCH: Climb to 1900' on track of 131°. Return to FS NDB. | | | | | |
| Alt Set: INCHES | | Trans level: FL 180 | | Trans alt: 18000' | |
| 1. SAFE ALTITUDE WITHIN 100 NM 8600'. 2. Pilot controlled lighting 122.2. | | | | | |



| | | | | | | | | |
|----------------------|-----|------|------|------|------|------|-----------------------------------|---------------|
| <i>Gnd speed-Kts</i> | 70 | 90 | 100 | 120 | 140 | 160 | Lighting - Refer to Airport Chart | 1900' on 131° |
| <i>NDB to MAP</i> | 1.2 | 1:02 | 0:48 | 0:43 | 0:36 | 0:31 | | |

| | | | |
|---|---------|------------------------|--|
| | | CIRCLE-TO-LAND | |
| | Max Kts | MDA(H) | |
| A | 90 | 1060' (504')-1½ | |
| B | 120 | 1060' (504')-2 | |
| C | 140 | 1060' (504')-2 | |
| D | 165 | 1160' (604')-2 | |

Chart changes since cycle 04-2013

ADD = added chart, REV = revised chart, DEL = deleted chart.

| ACT | PROCEDURE IDENT | INDEX | REV DATE | EFF DATE |
|-----|-----------------|-------|----------|----------|
|-----|-----------------|-------|----------|----------|

FT SIMPSON, NT (FT SIMPSON - CYFS)

TERMINAL CHART CHANGE NOTICES

No Chart Change Notices for Airport CYFS

Chart Change Notices for Country CAN

Type: Gen Tmnl

Effectivity: Permanent

Begin Date: 20060413

End Date: No end date

All (GPS) approach procedure titles changed to (GNSS).